

محاضرة التشريح الشعاعي - المرحلة الثانية

كلية المامون الجامعة

الفصل الأول

اعداد م د- عدى يوسف

NORMAL ANATOMY OF THE FACIAL BONES

The face skeleton includes 14 facial bones (6 paired and 2 unpaired)

14 facial bones form the face, provide cavities for the sense organs (eyes, mouth, and nose),

protect the entrances to the digestive and respiratory tracts,

serve as attachment points for facial muscles.

The 14 facial bones are

the nasal bones

the maxillary bones

zygomatic bones

palatine

vomer 1

lacrimal bones

the inferior nasal conchae

the mandible. 1

The auditory ossicles of the middle ear

All of these bones occur **in pairs** except for **the mandible and the vomer**

The auditory ossicles of the middle ear transmit sounds from the air as vibrations to the fluid-filled cochlea.

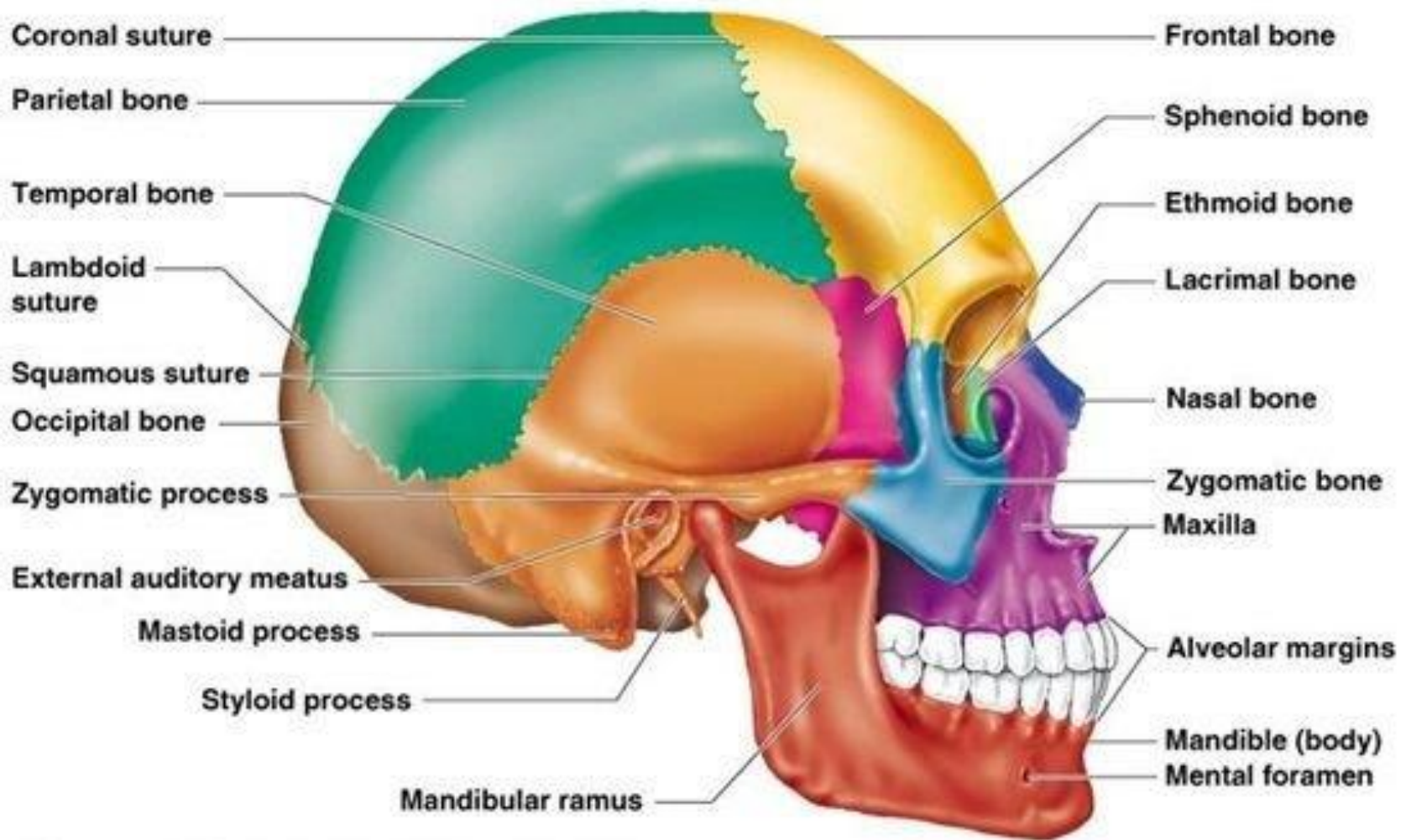
The auditory ossicles consist of six bones:

two malleus bones

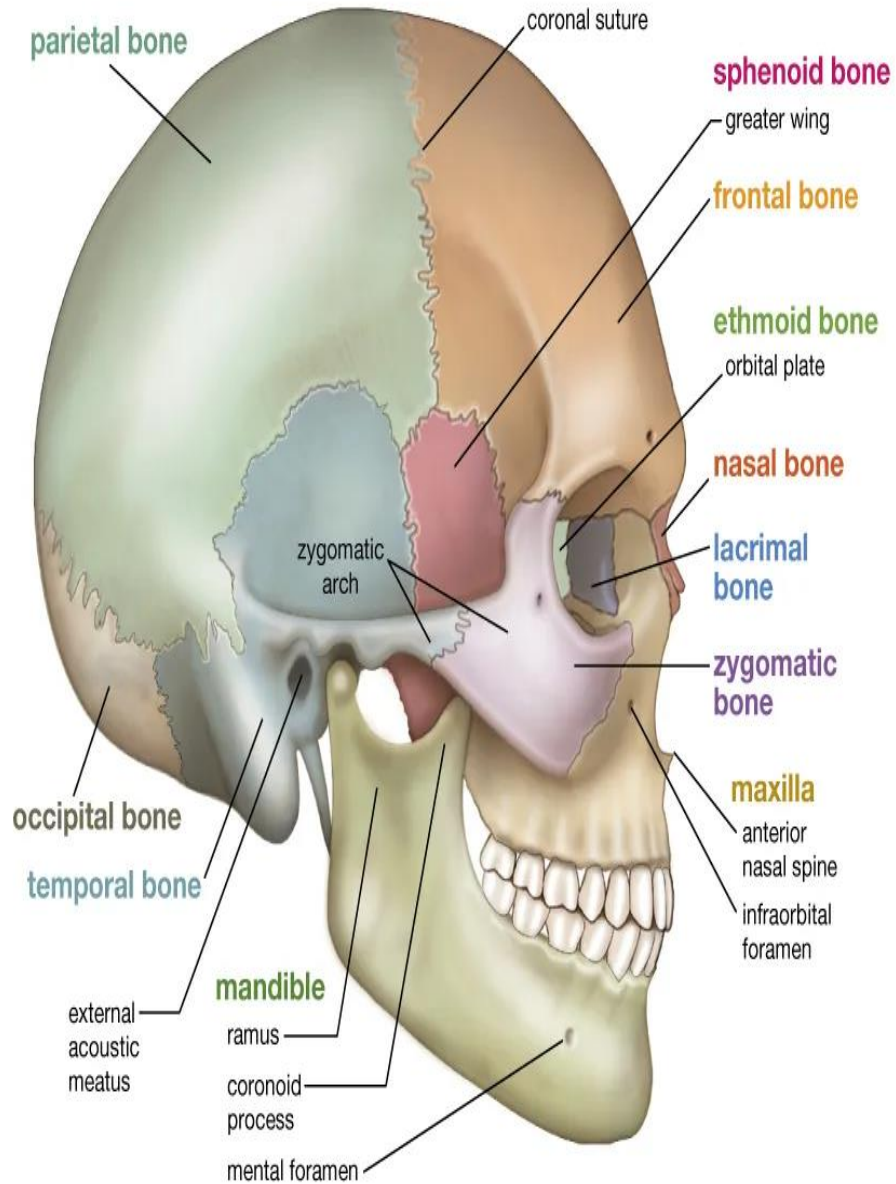
two incus bones

two stapes (one of each bone on each side).

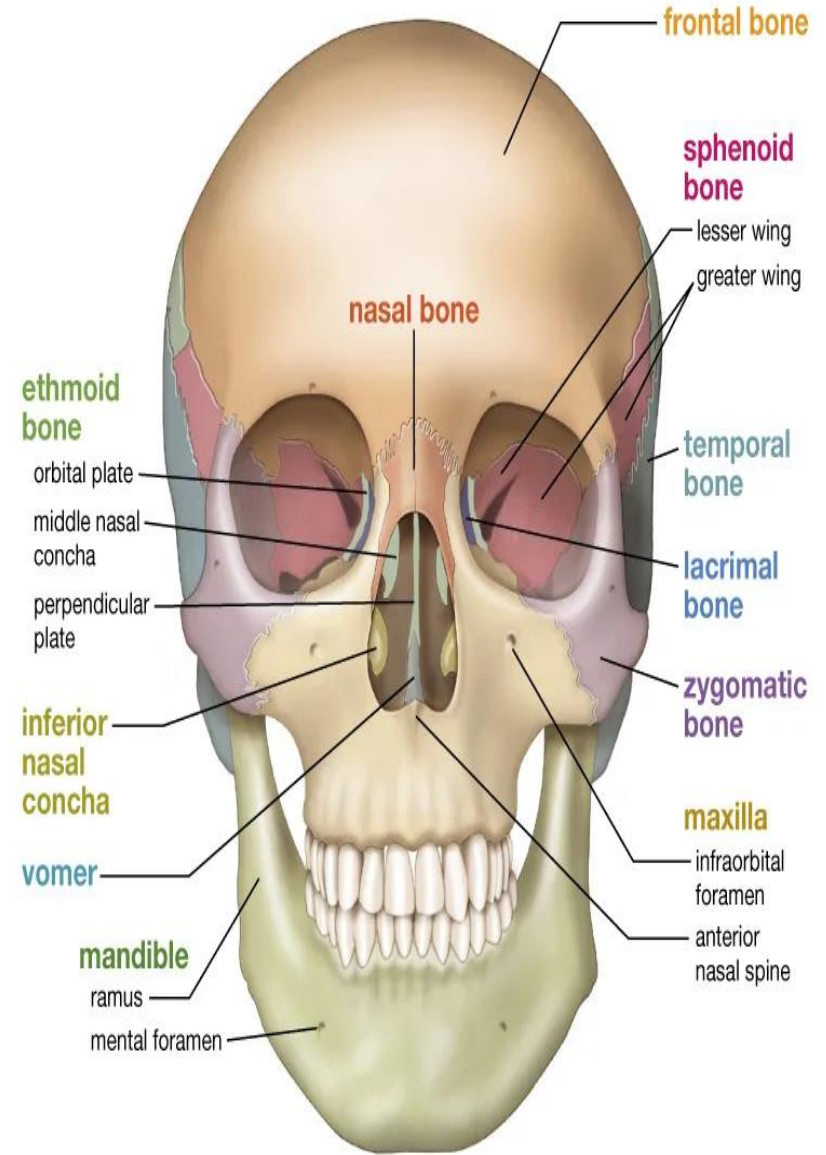
These are the smallest bones in the body and are unique to mammals

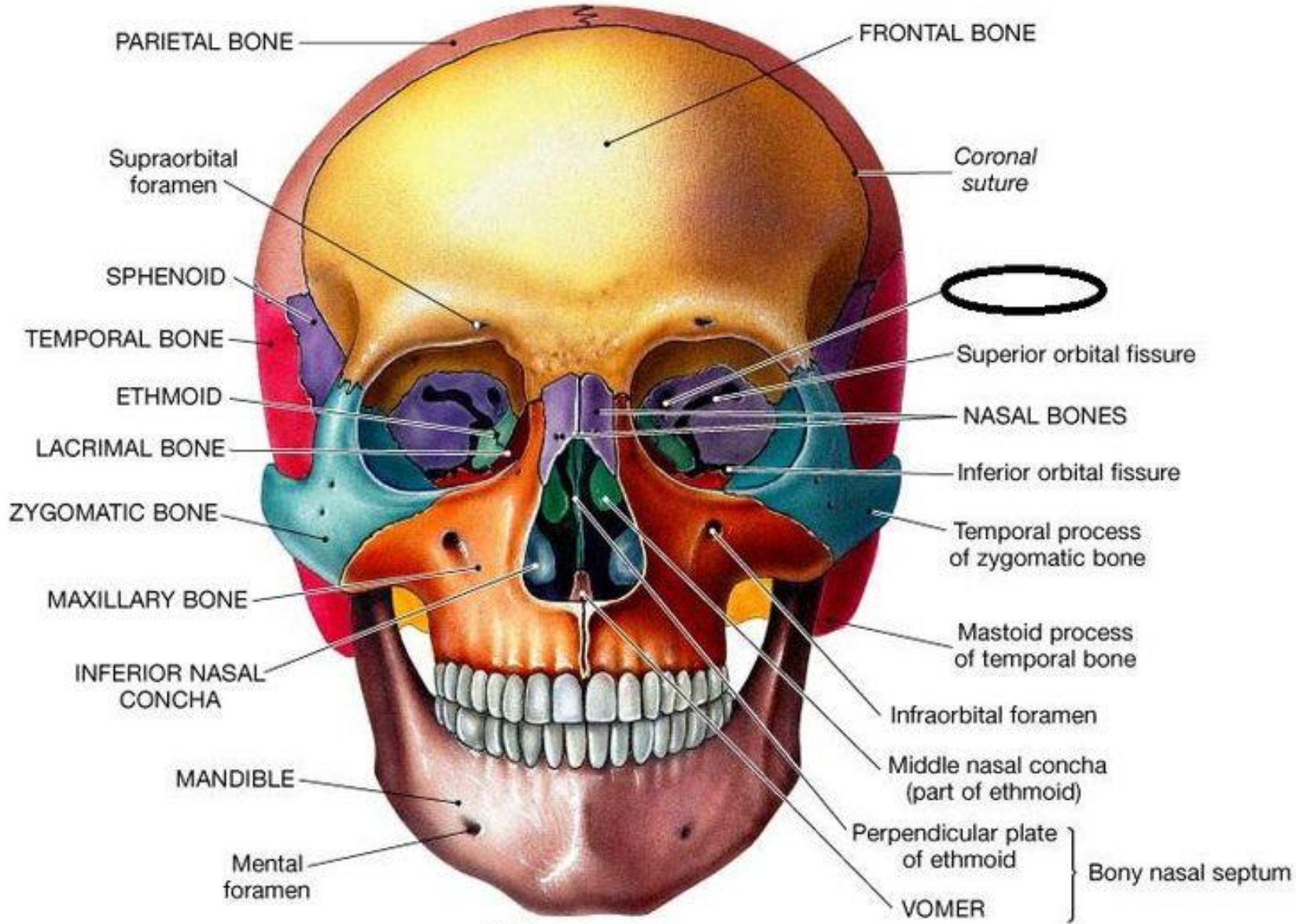


Lateral view

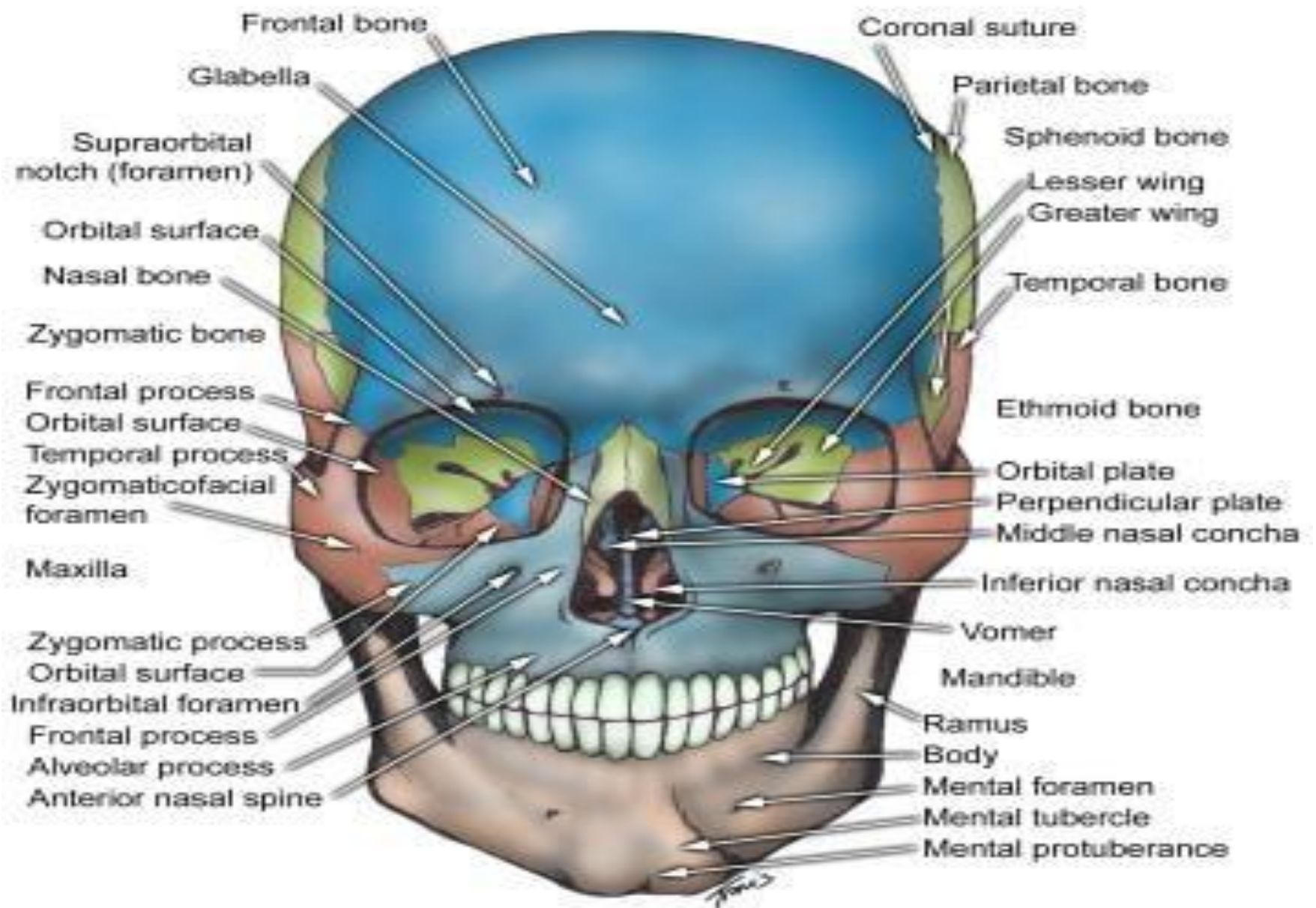


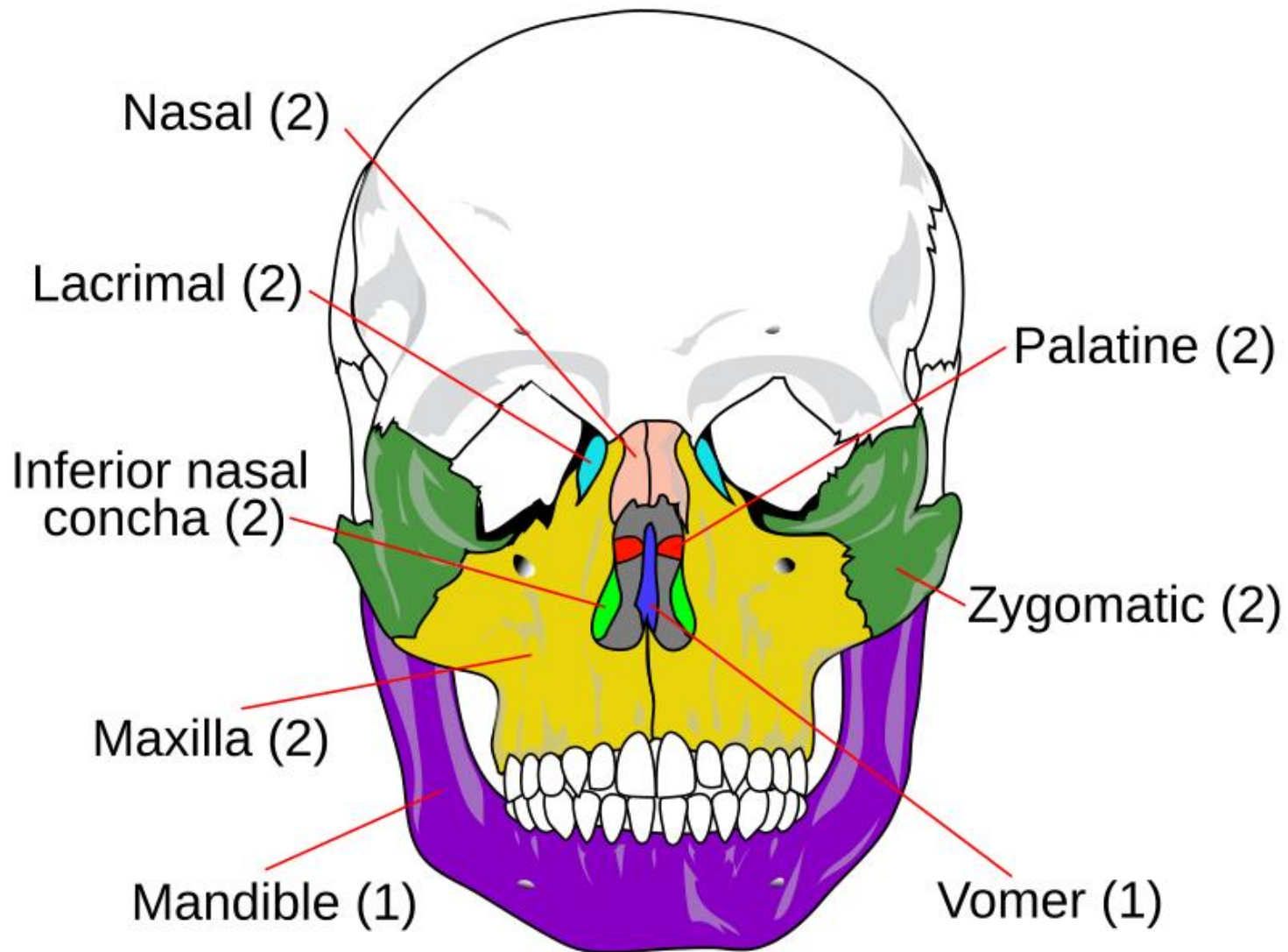
Frontal view



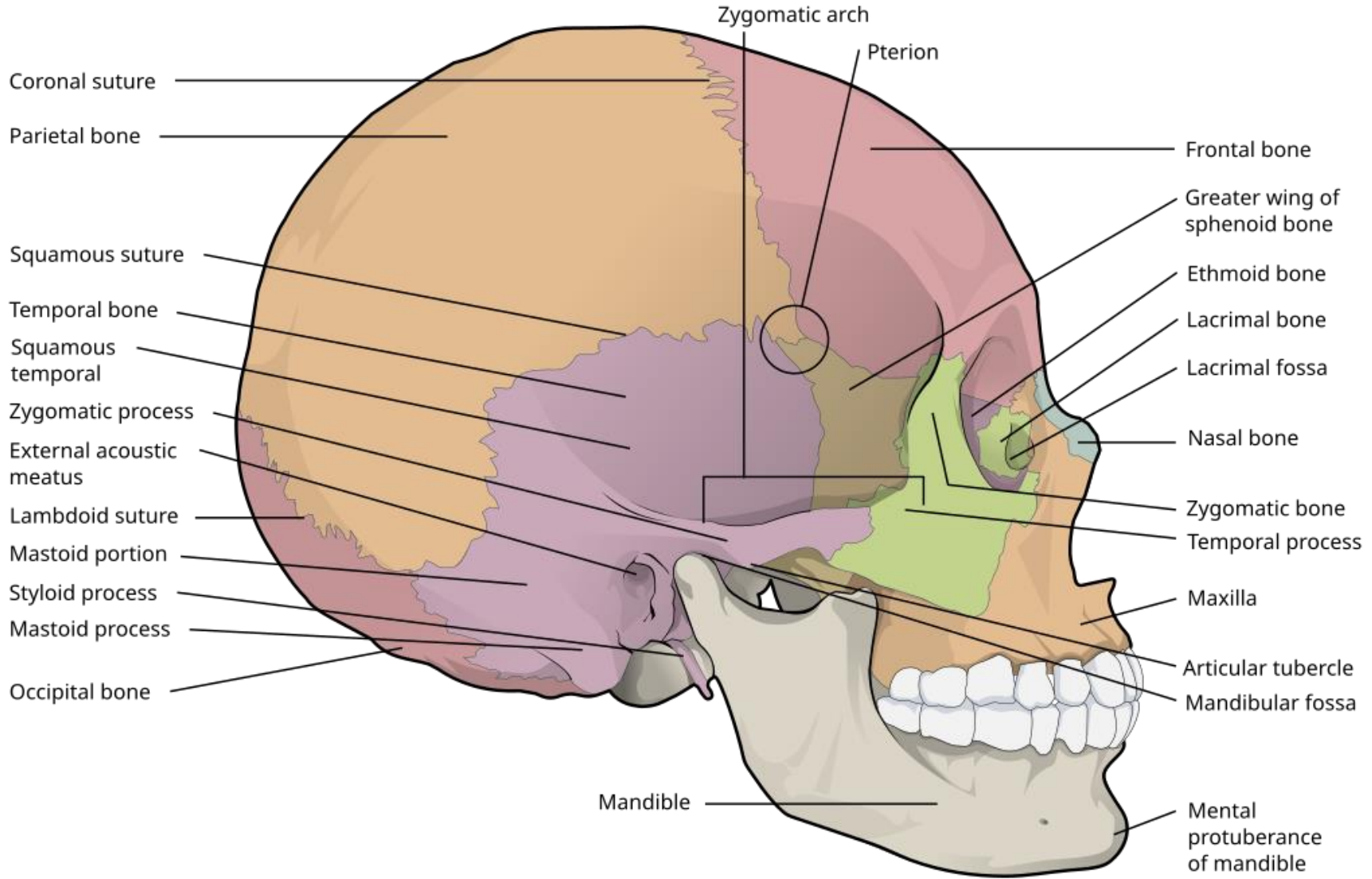


(d) Anterior view

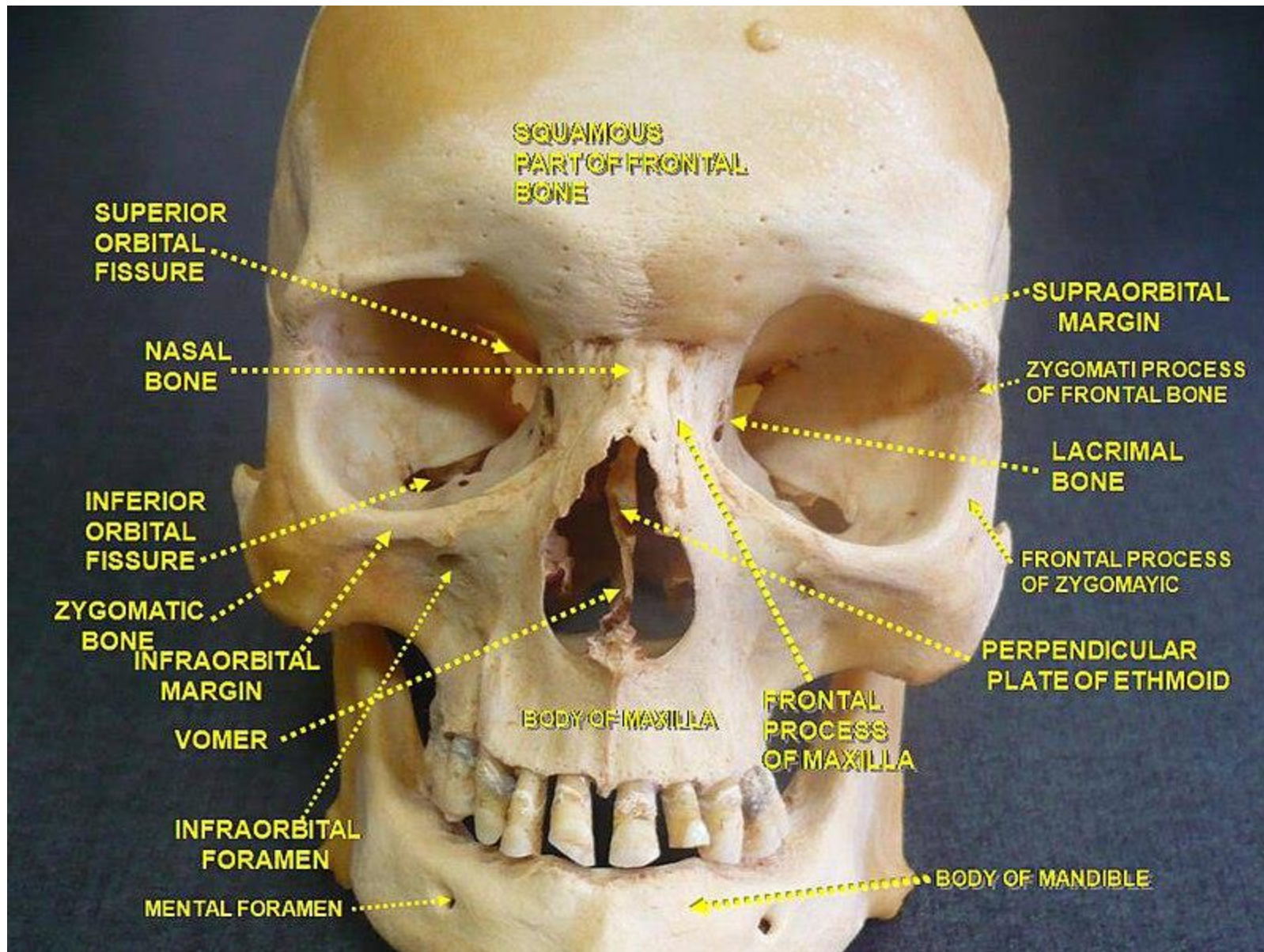




14 facial bones



Right lateral view



Norma verticalis (vertical view)

Frontal bone 1

Parietal bone 2

Occipital bone 1

Norma occipitalis (back view)

Occipital bone 1

Parietal bone 2

Squamous part of temporal bones 2

Mastoid process 2

Norma frontalis (frontal view)

Frontal bone 1

Maxilla 2

Mandible 1

Zygomatic bone 1

Nasal bone 2

Norma lateralis (lateral view)

Parietal bone

Mandible

Maxilla

Temporalar bone

Nasal bone

Zygomatic bone

Occipital bone

Styloid process

Mastoid process

Norma basalis (basal view)

Maxilla

Ethmoid bone

Sphenoid bone

Dorsum sellae

Temporal bone petrous part